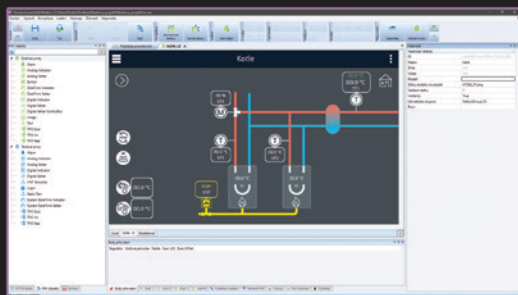
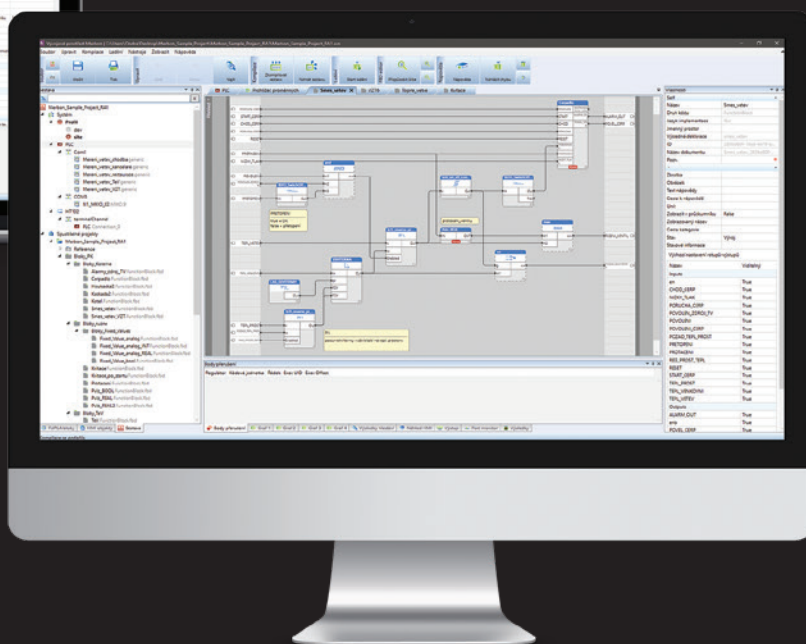
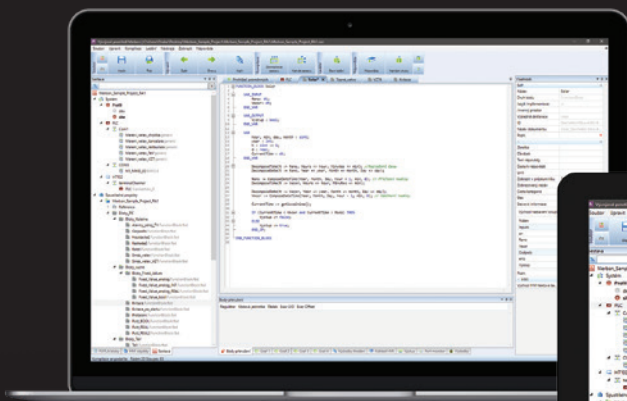


merbon

IDE

Development environment, PLC programming

Clear development environment in which **MARK/WALL process stations** are programmed and configured. Programming **according to the IEC 61131-3** standard is done using **function blocks (FUPLA)** or **structured text (ST)**. It helps to save service costs and ensures comfortable commissioning. Merbon IDE also serves as a graphics editor for the web, LCD menu, and mobile application.



Communication protocols

Modbus RTU and TCP, M-Bus and IEC 62056-21. Communication with internal SSCP protocol via ethernet and serial line. Integration into third-party clients: BACnet/IP server and external application OPC UA/DCOM server.

